

AI Smart Camera Instruction Manual



HiEasy

I. Download and Install the APP

1. Quickly download and install by scanning the QR code.



HiEasy APP

2. Search for "HiEasy" in the mobile app store to download and install.



II. Account Registration and Login

- 1、 Open the APP, click "Register with Mobile/Email" and follow the prompts to register an account. Mobile numbers and emails can both be used for registration.
- 2、 For existing accounts, directly enter the account and password to log in.

The image displays three sequential mobile app screens for account management.

Screen 1: Login

- Header: Login
- Country selector: 中国 (+86 >)
- Input field: Enter a phone number or email address
- Input field: Enter your password
- Link: Forgot Password?
- Button: Login
- Links: Verification Code Login | New User Registration
- Footer: Log in with a third-party account (WeChat, Snapchat, Apple icons)

Screen 2: Sign-up

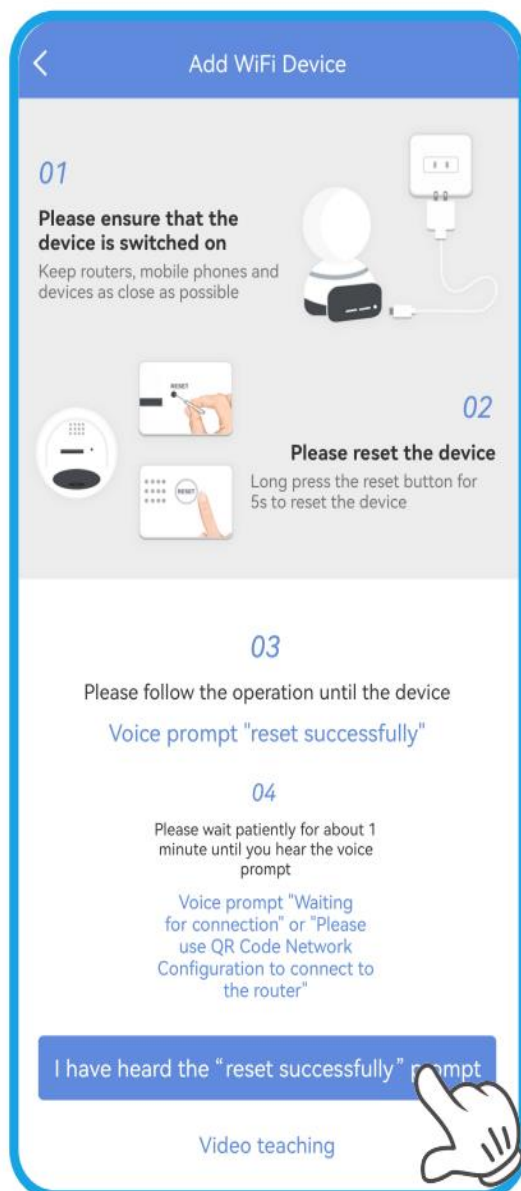
- Header: Sign-up
- Header: Welcmoe to HiEasy
- Country selector: 中国 (+86 >)
- Input field: Enter a phone number or email address
- Text: After successfully registering an account, the country/region cannot be modified
- Checkbox: I have read and agreed to the "User Agreement" and "Privacy Policy"
- Button: Next
- Button: One-click registration

Screen 3: Sign-up

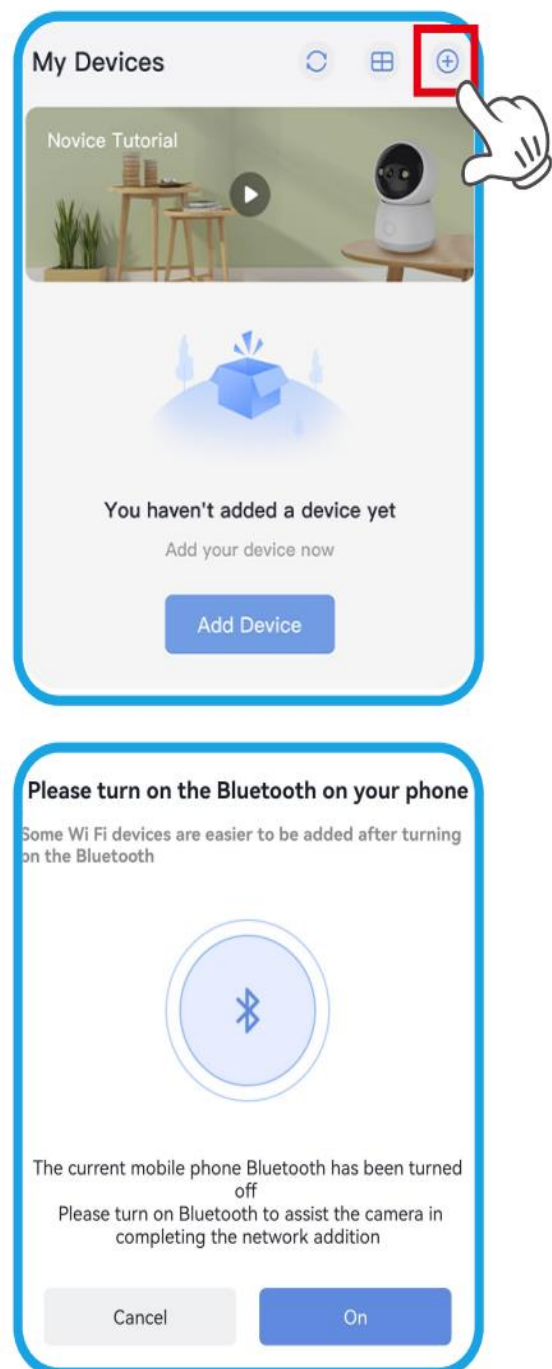
- Header: Sign-up
- Phone number: 1767***2090
- Input field: Please enter the gr... (4 3 3 6)
- Input field: Enter verification code (Get the verification code)
- Input field: Enter your password
- Input field: Enter your password again
- Description: The password contains 8-16 characters, including alphabetic and numeric characters
- Button: Sign-up
- Text: No verification code is received?

III. WiFi Camera Connection Methods★

Before adding a WiFi camera, ensure that your mobile phone is connected to WiFi and Bluetooth is turned on. Place the camera close to the router and power it on.

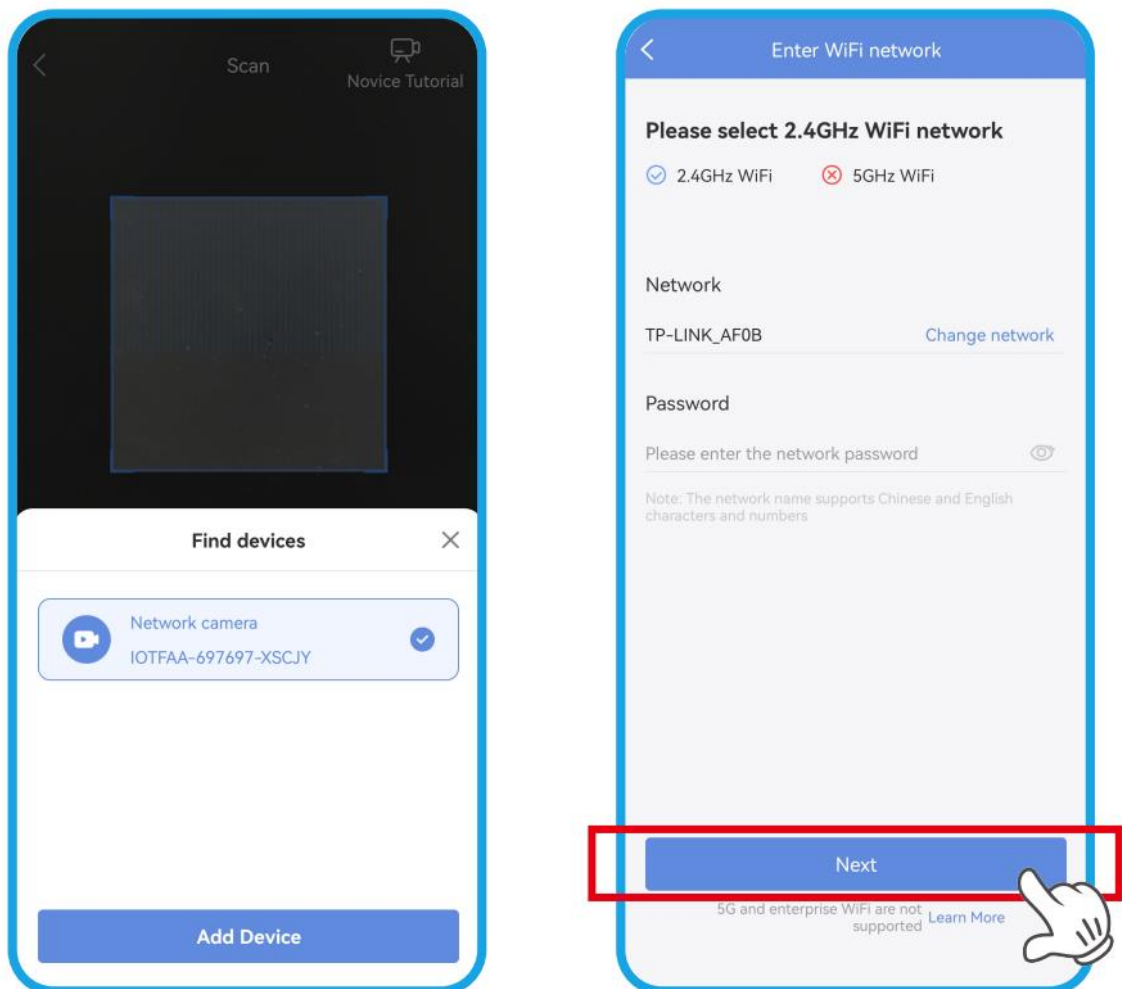


Preparations before addition

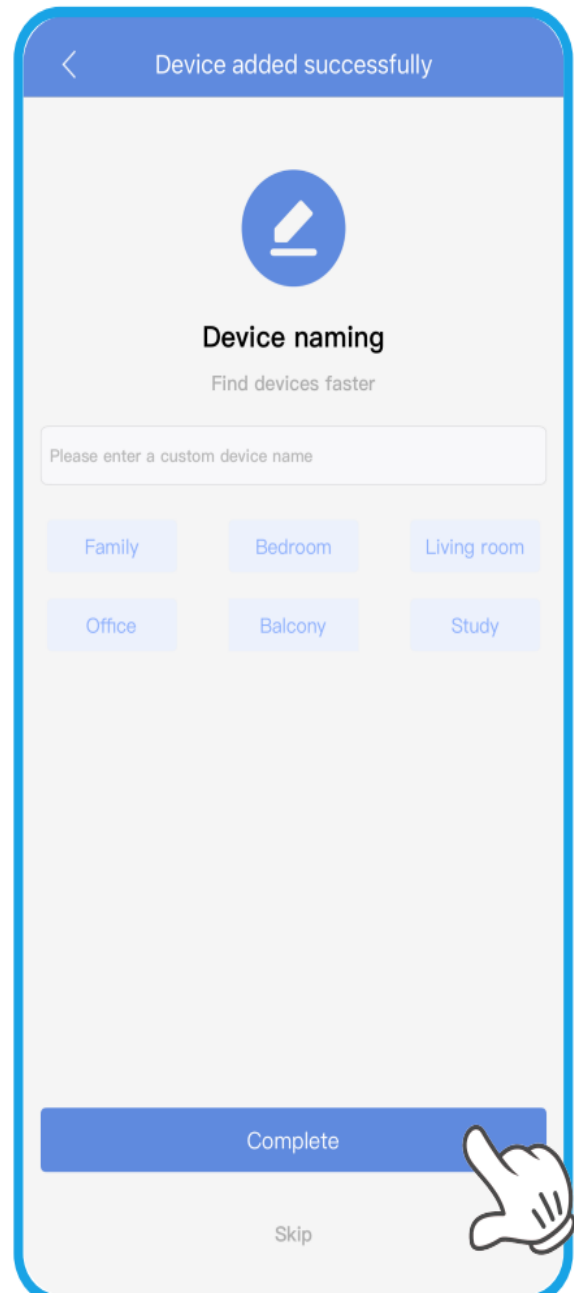
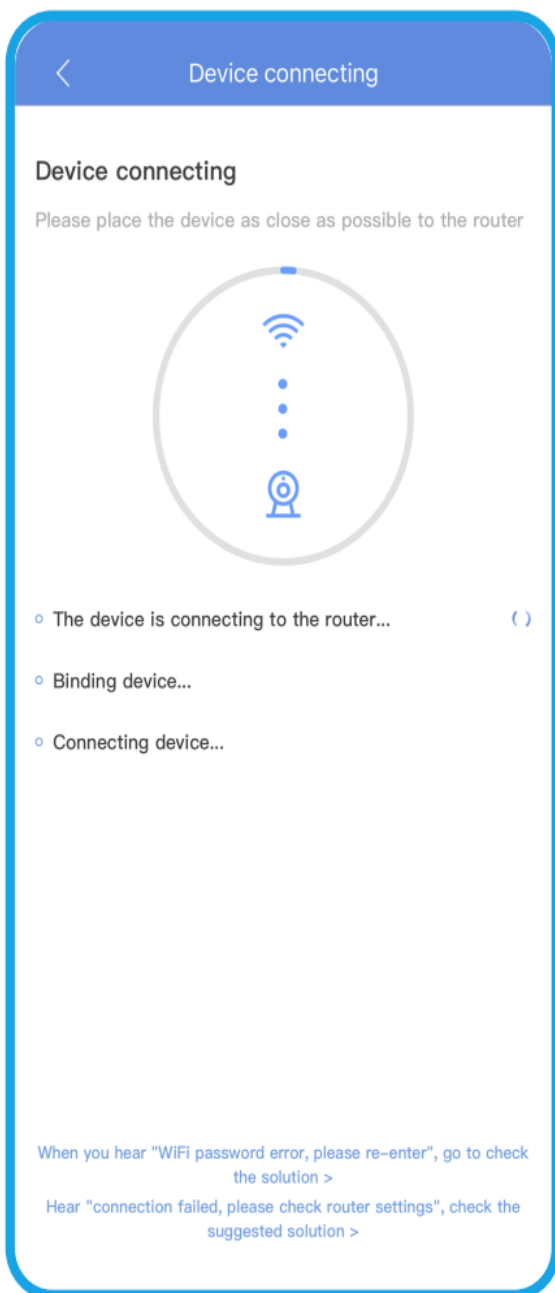


Bluetooth Pairing:

- 1、 After the camera powers on and you hear the broadcast "Waiting to be added", open the APP and start adding the camera. If you hear an error broadcast, press and hold the reset button for 5 seconds to restart the camera.
- 2、 Enter the WiFi password as prompted and wait. When the camera broadcasts "Device added successfully", the addition is complete. This process takes 60 - 120 seconds.

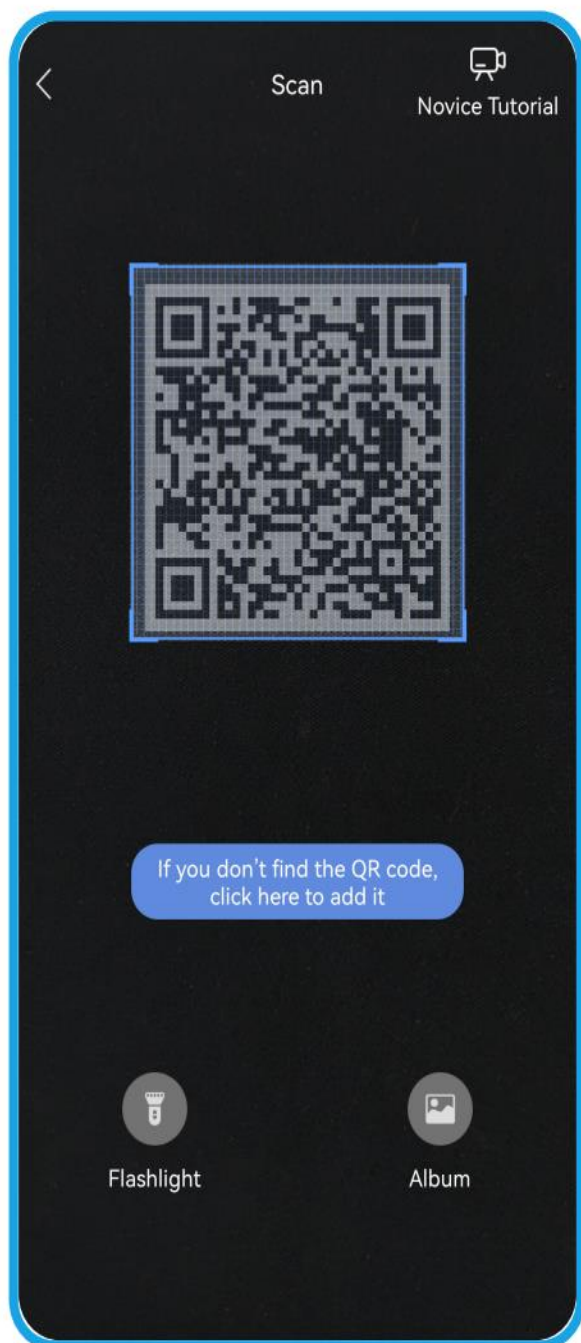


3、 After successful addition, set the camera name and click to complete. You can then view the added camera on the home page.

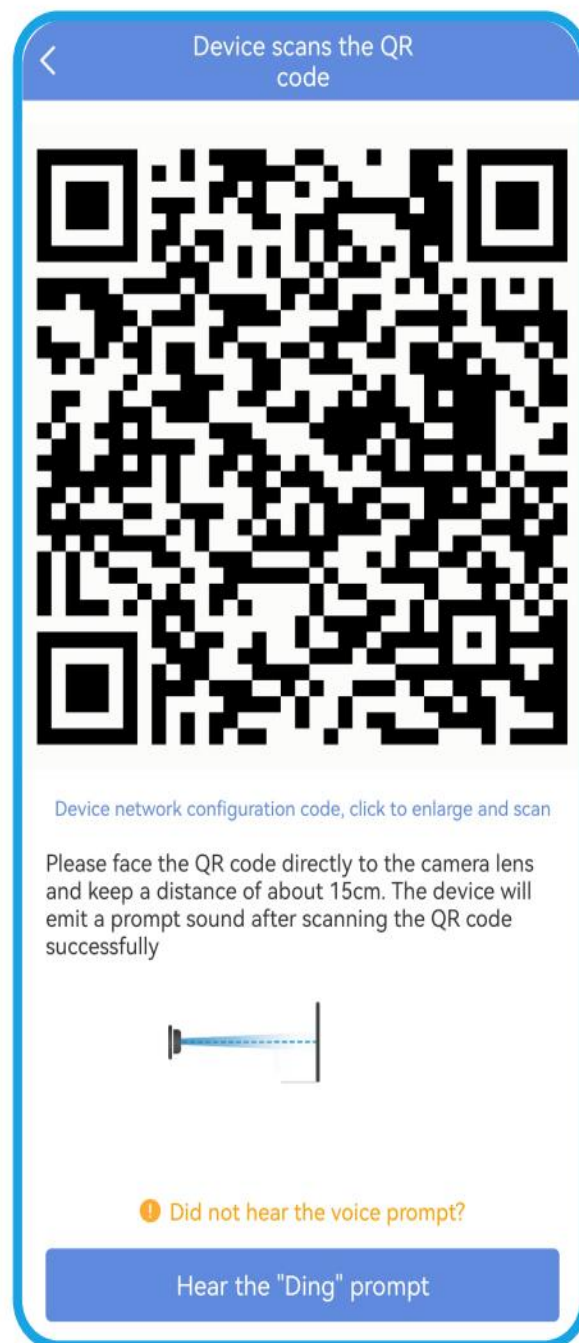


QR Code Pairing:

Open the APP and scan the QR code on the camera as prompted.



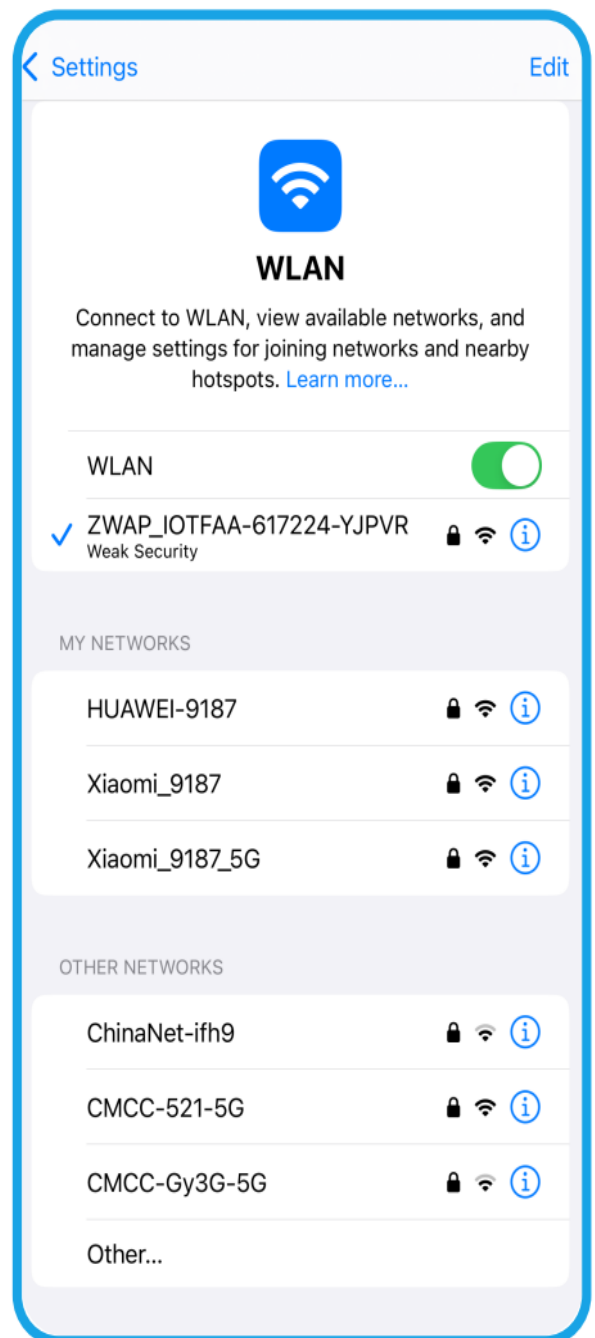
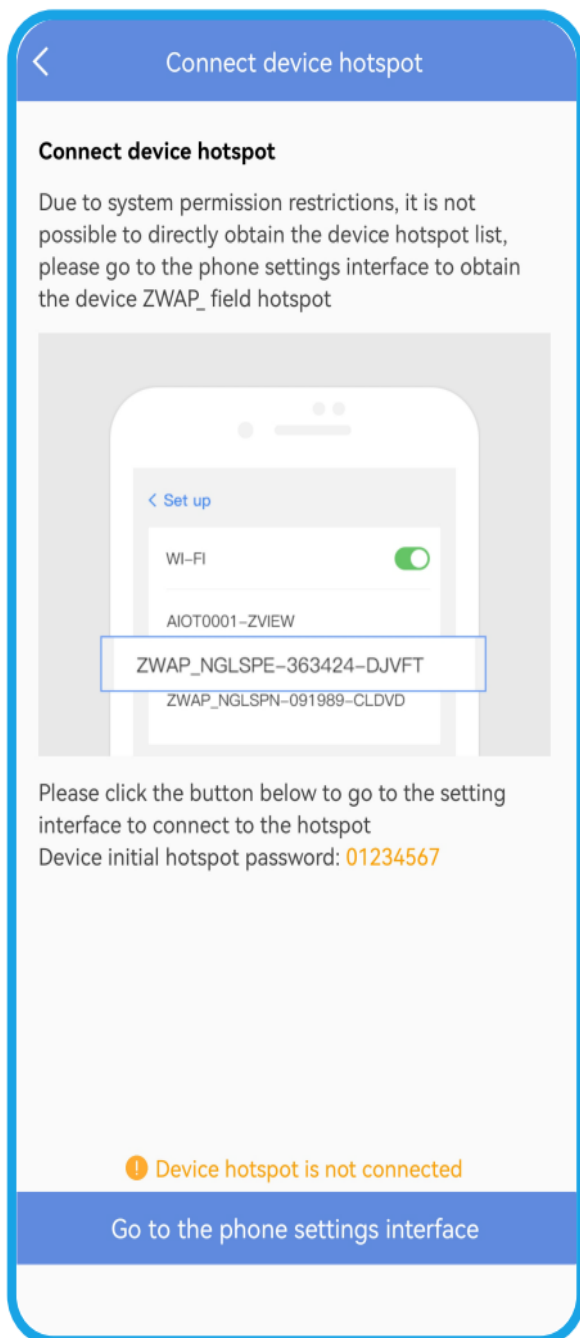
Scan the QR code on the camera with your mobile phone



Use your mobile phone to scan the QR code generated by the camera.

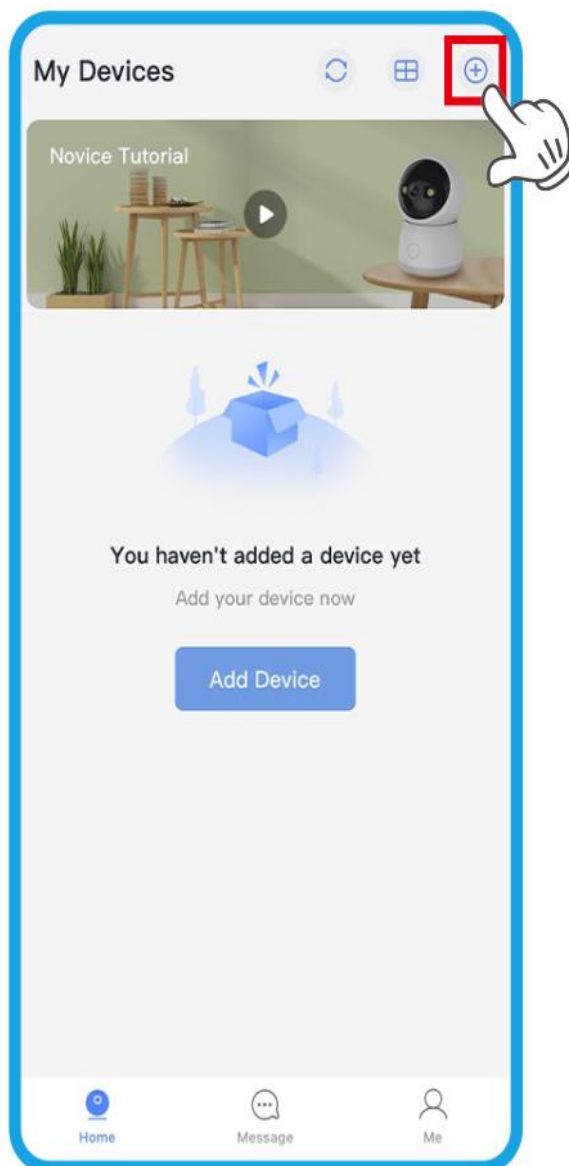
AP Hotspot Pairing:

- 1、 Open the APP and select AP hotspot pairing as prompted.
- 2、 Connect to the hotspot directly from your mobile phone for local area network viewing., Hotspot password: 01234567。

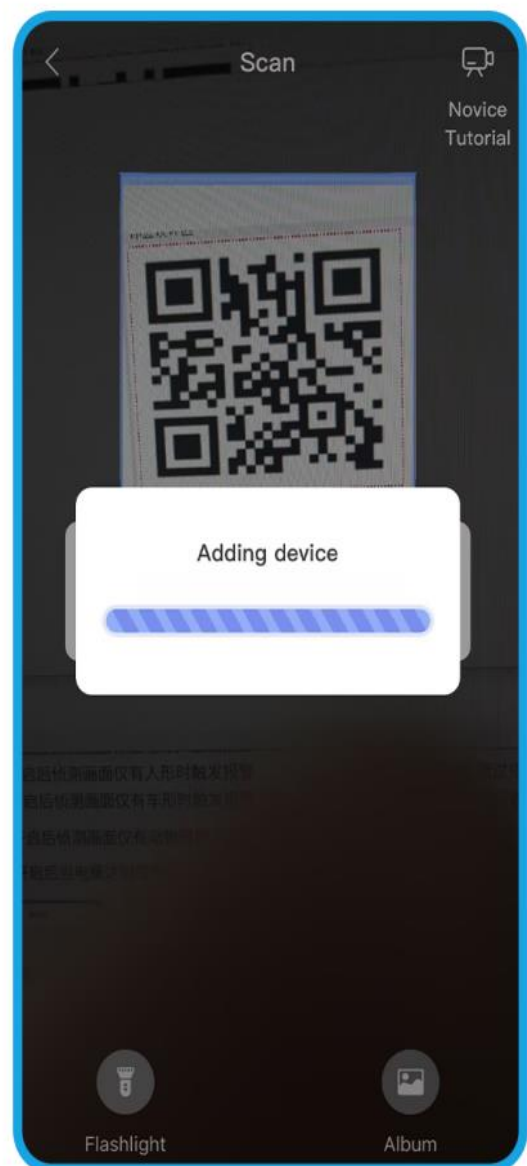


IV. 4G Camera Connection Method★

After the camera powers on and you hear the voice broadcast "Network connection successful", open the APP and scan the QR code on the camera body to add it. If there is no voice broadcast prompt, press and hold the reset button for 5 seconds and wait for the camera to restart before operating.



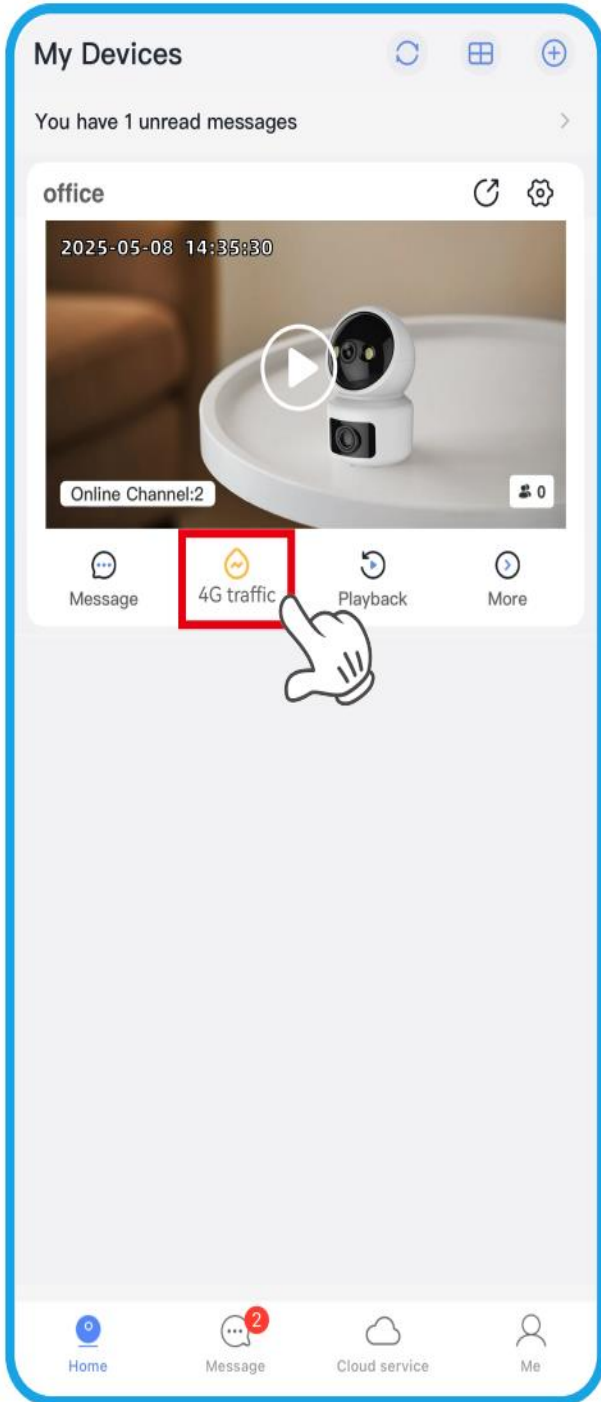
Click the "+" or scan the blue prompt bar in the middle of the interface



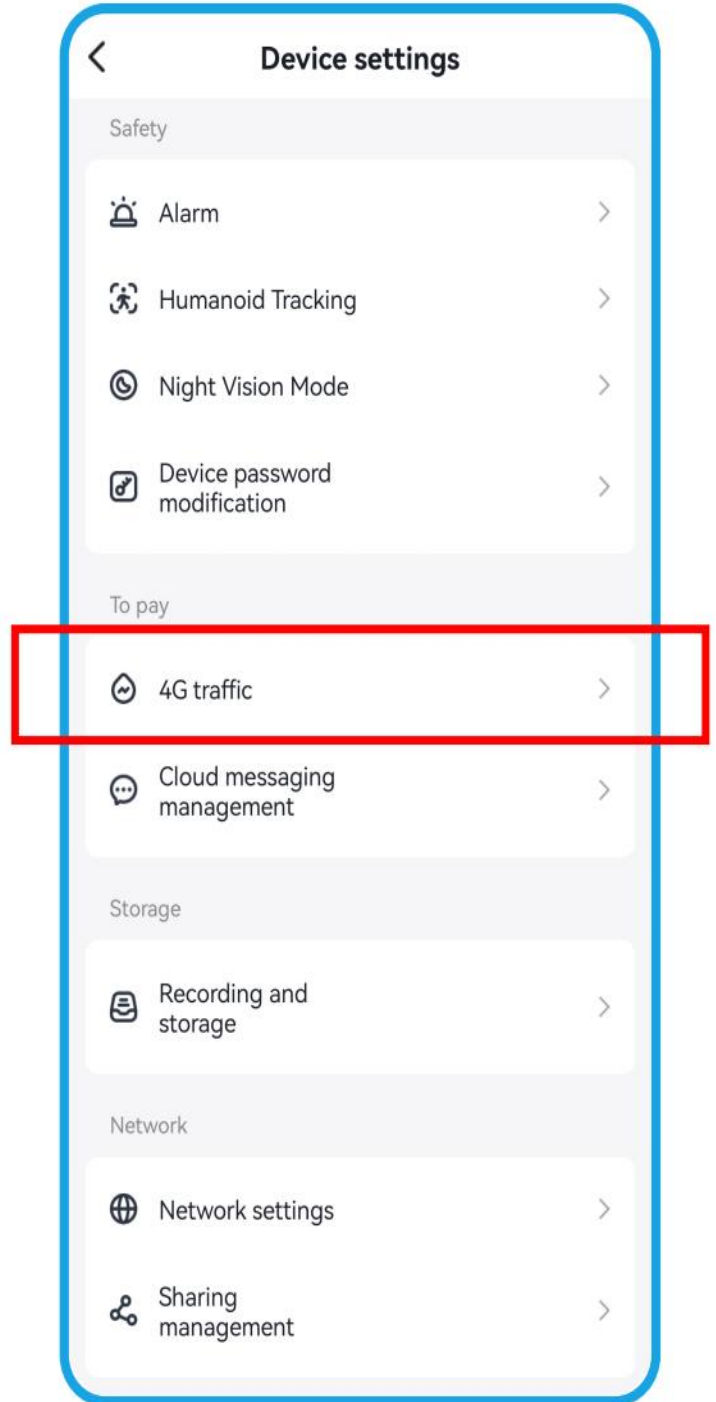
Scan the QR code on the camera with your mobile phone



V. 4G Data Purchase

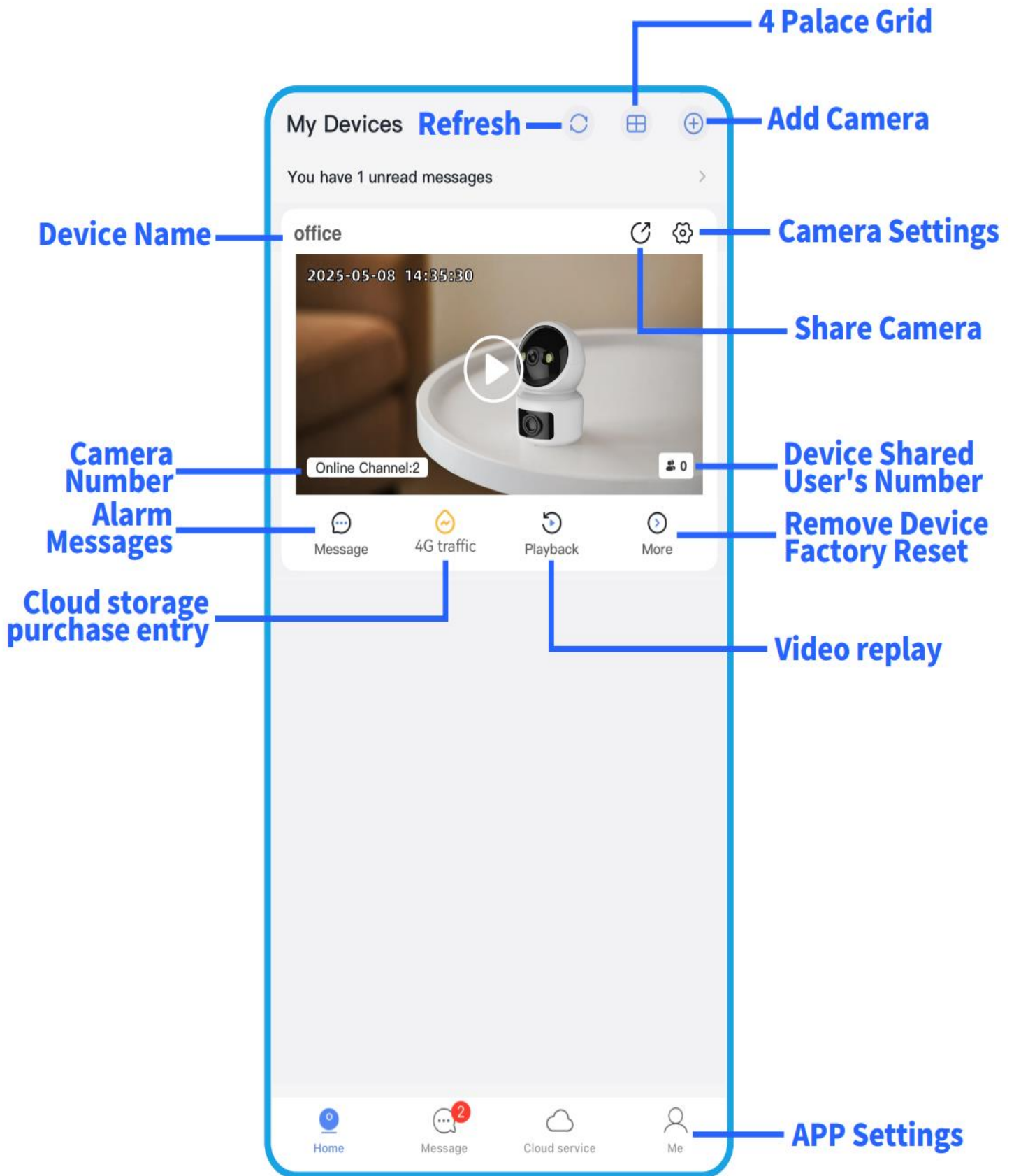


Home Page ➔ 4G Traffic Management

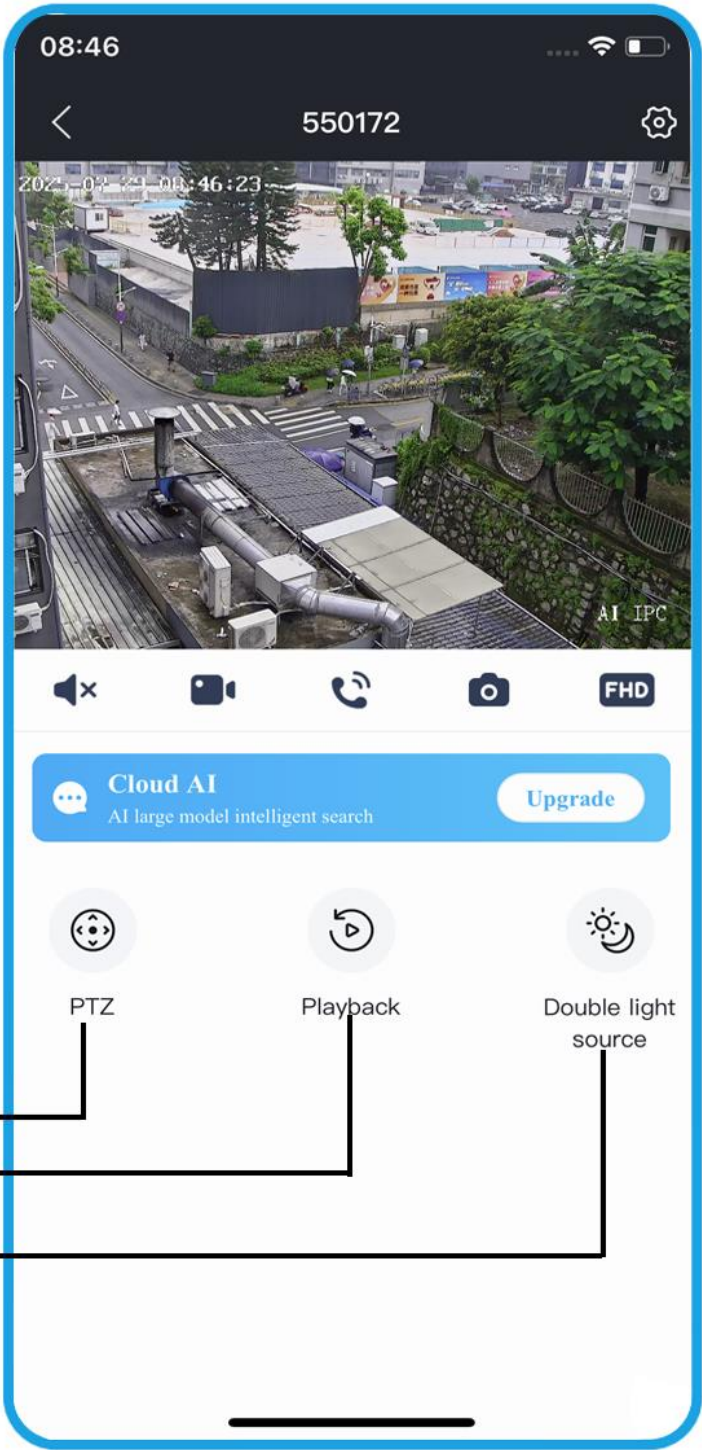


Home Page ➔ Device Setting
➔ 4G Traffic Management

VI. Home Page

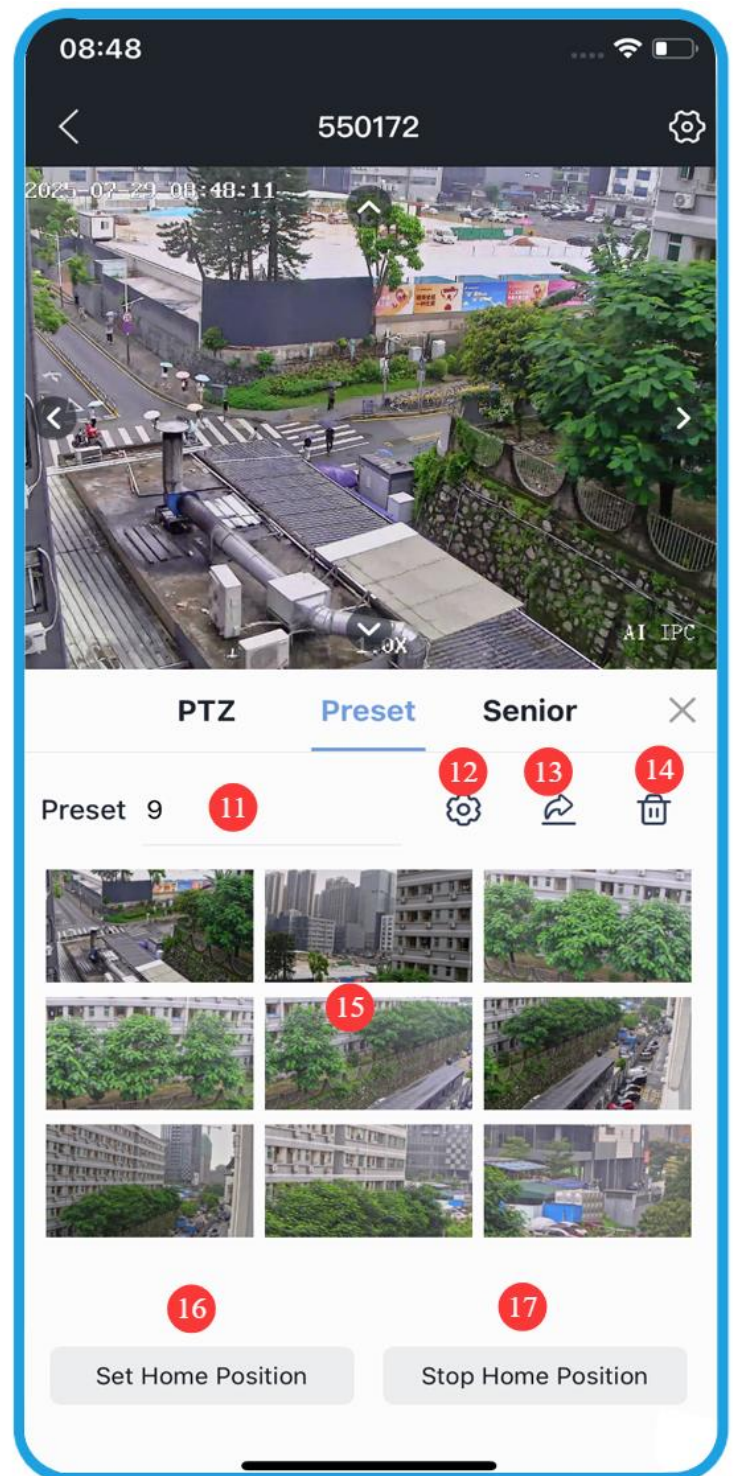
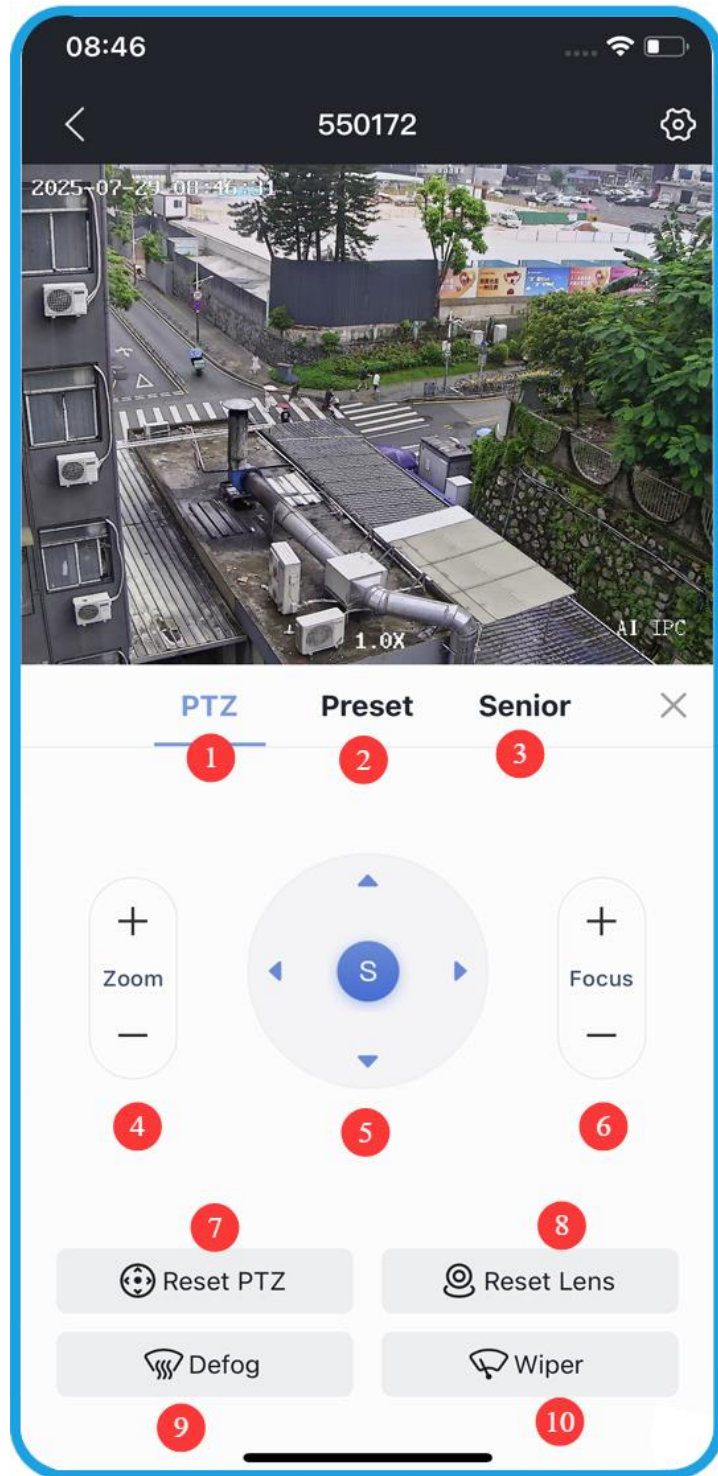


VI-1: Home Page for PTZ

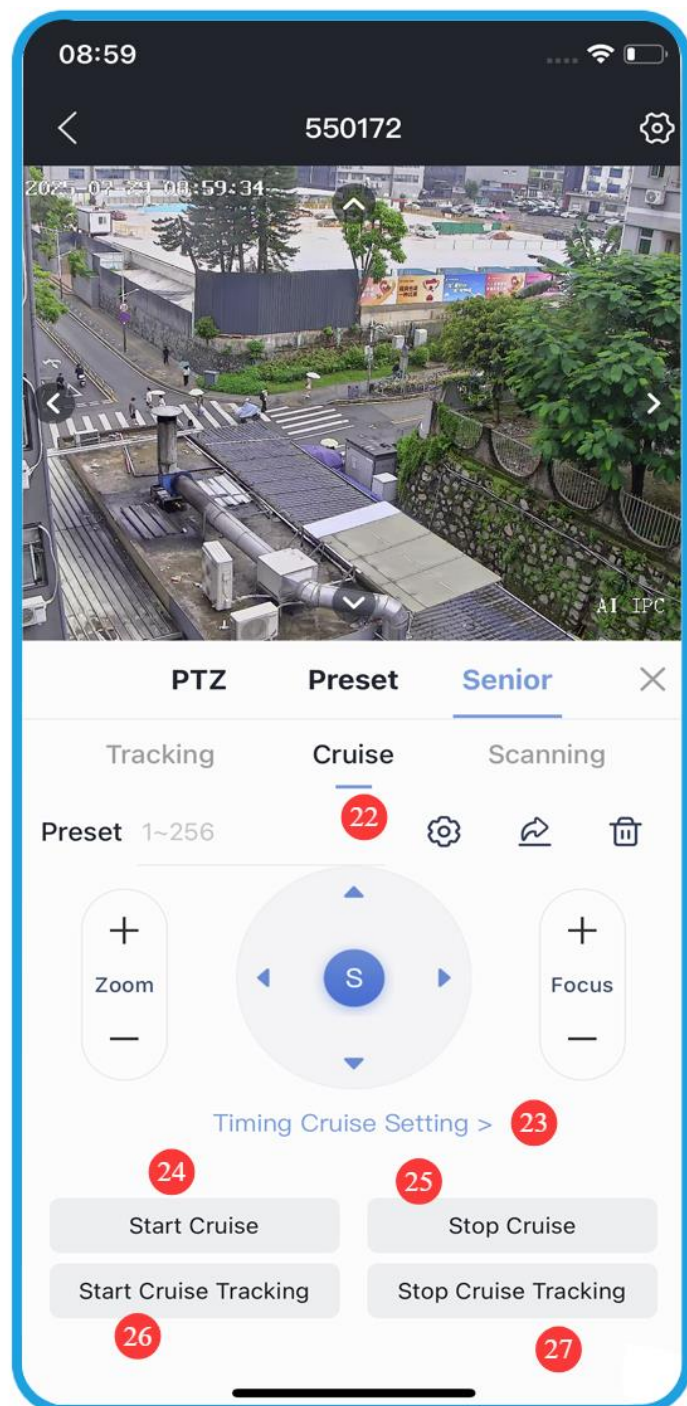
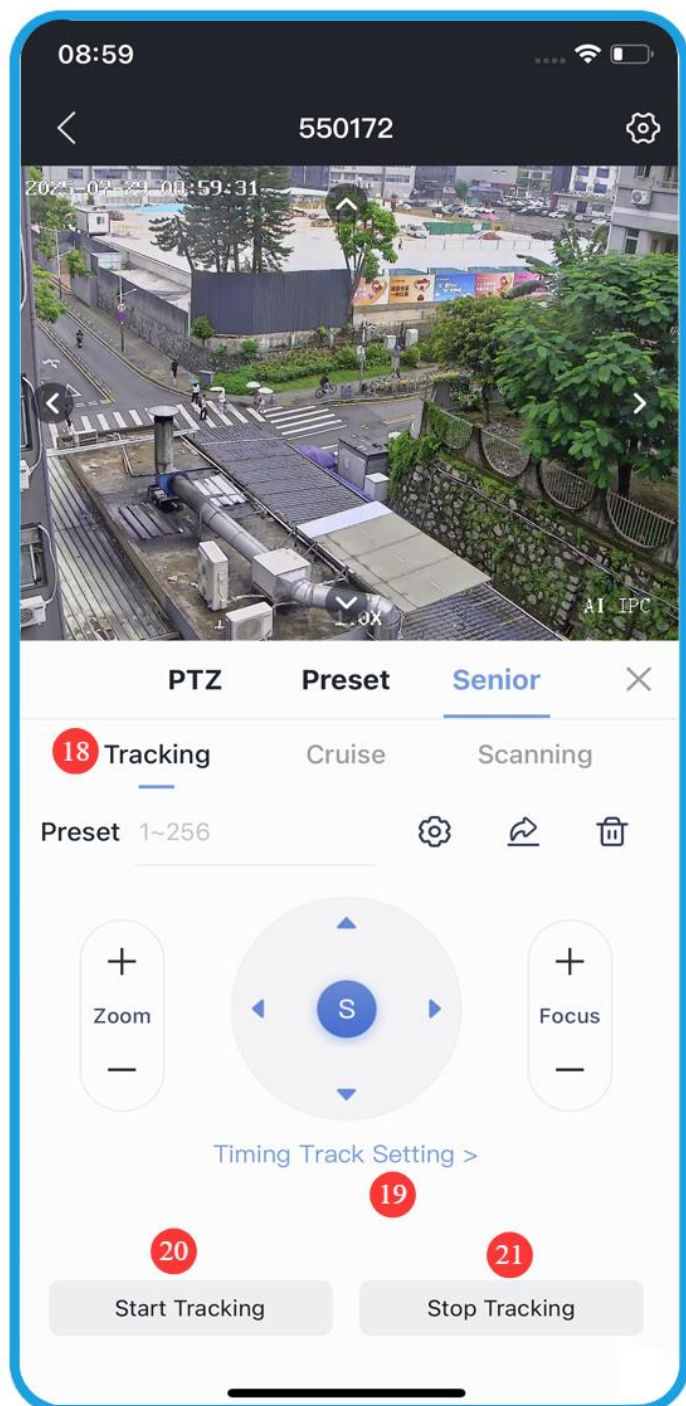


PTZ Control UI
Record playback
Light switch

VI-2, PTZ camera operation interface instructions:



- 1: Enter PTZ control interface; 2: Enter preset position operation interface;
- 3: PTZ advanced function setting interface; 4: ZOOM+/-; 5: Pan/Tilt control; 6: Focus+/-;
- 7: Reset PTZ; 8: Reset lens;
- 9: Enable internal defogging function of camera(The camera needs to support this function);
- 10: Enable wiper function(The camera needs to support this function);
- 11: Preset position input field; 12: Set preset; 13: Call preset; 14: Delete preset position;
- 15: Display thumbnails of 1-9 preset positions;
- 16: Setting and turn on home position;
- 17: Turn off home position



18: Enter the tracking control interface;

19: Set the tracking time;

20: Start tracking;

21: Stop tracking;

22: Enter the cruise control interface;

23: Set the automatic cruise time period;

24: Start cruise;

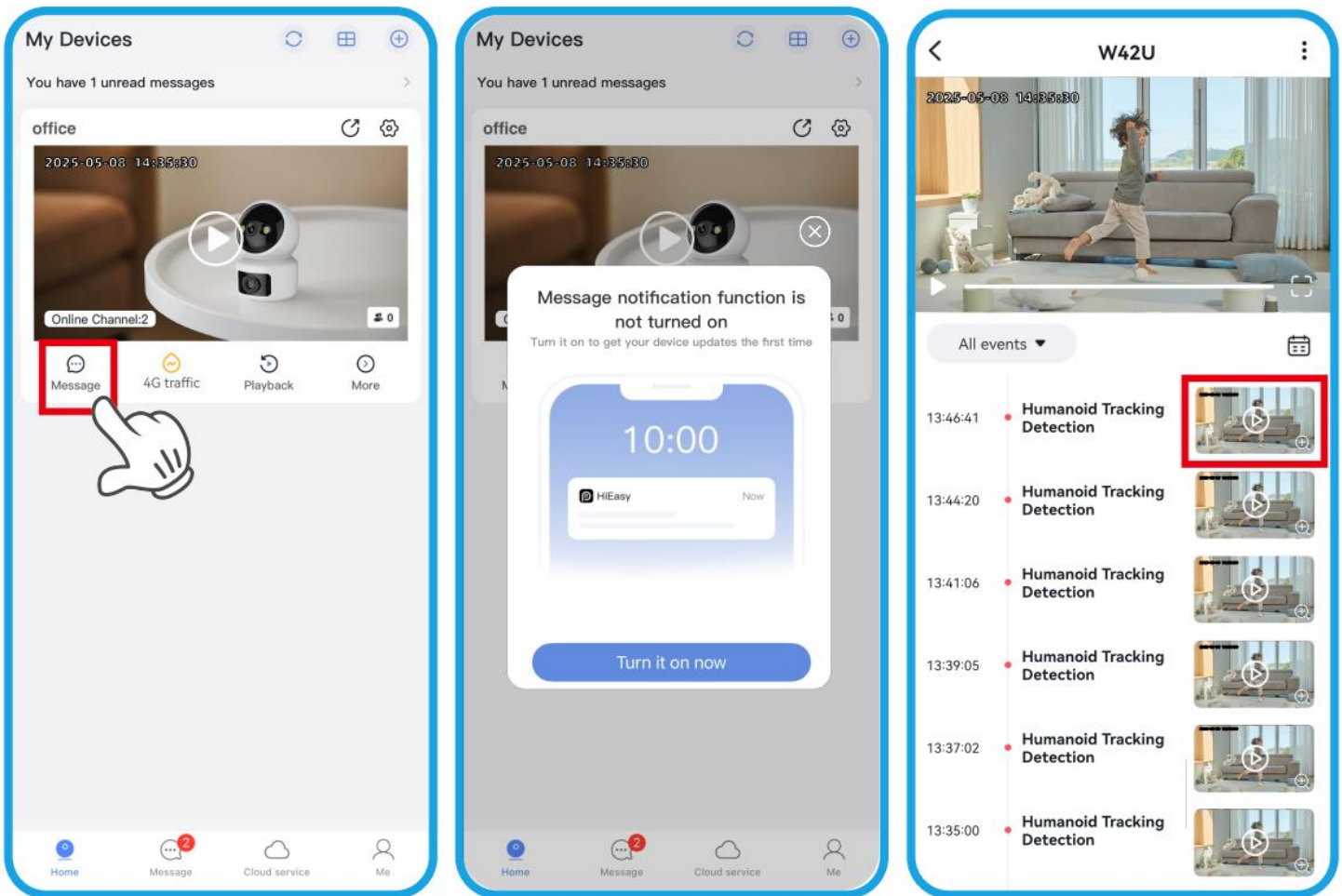
25: Stop cruise;

26: Start cruise tracking;

27: Close cruise tracking

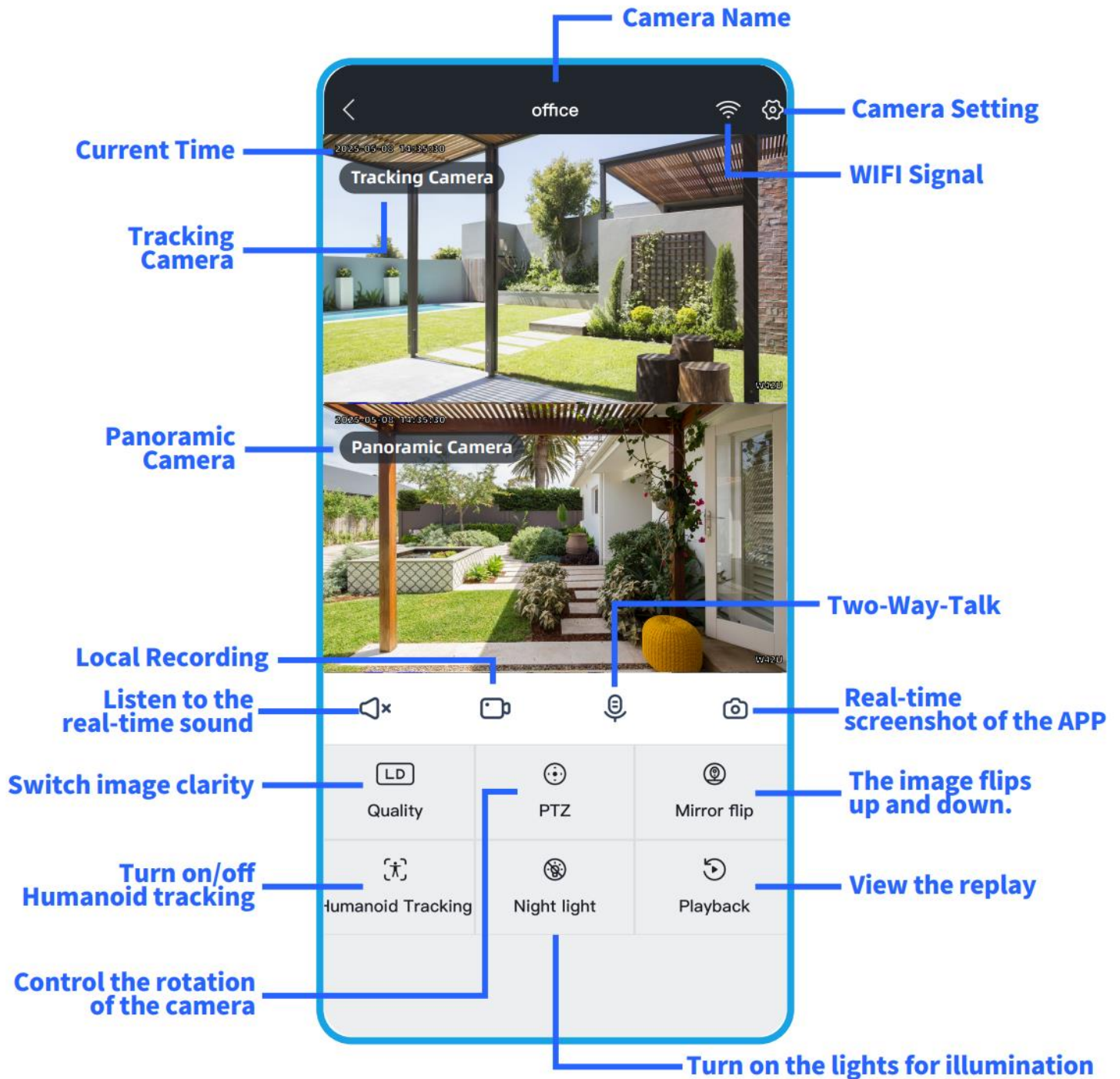
VII. Alarm Push

- 1、 After the device is added successfully, click "Alarm" and follow the prompts to operate.
- 2、 Alarm messages can be used to view videos and pictures, which are saved for 7 days by default.



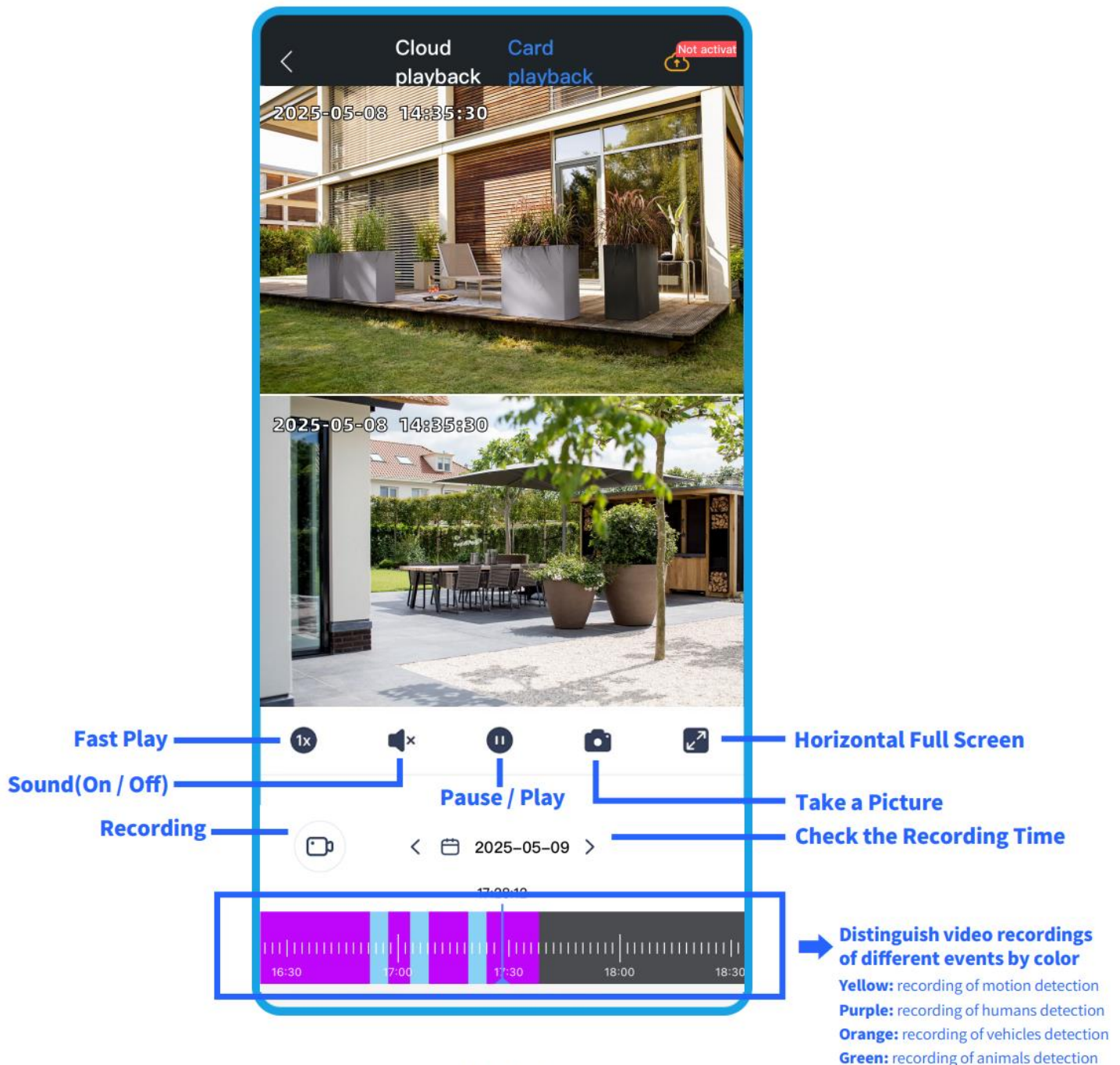
VIII. Live View

Click the preview window on the home page to enter the live view screen.



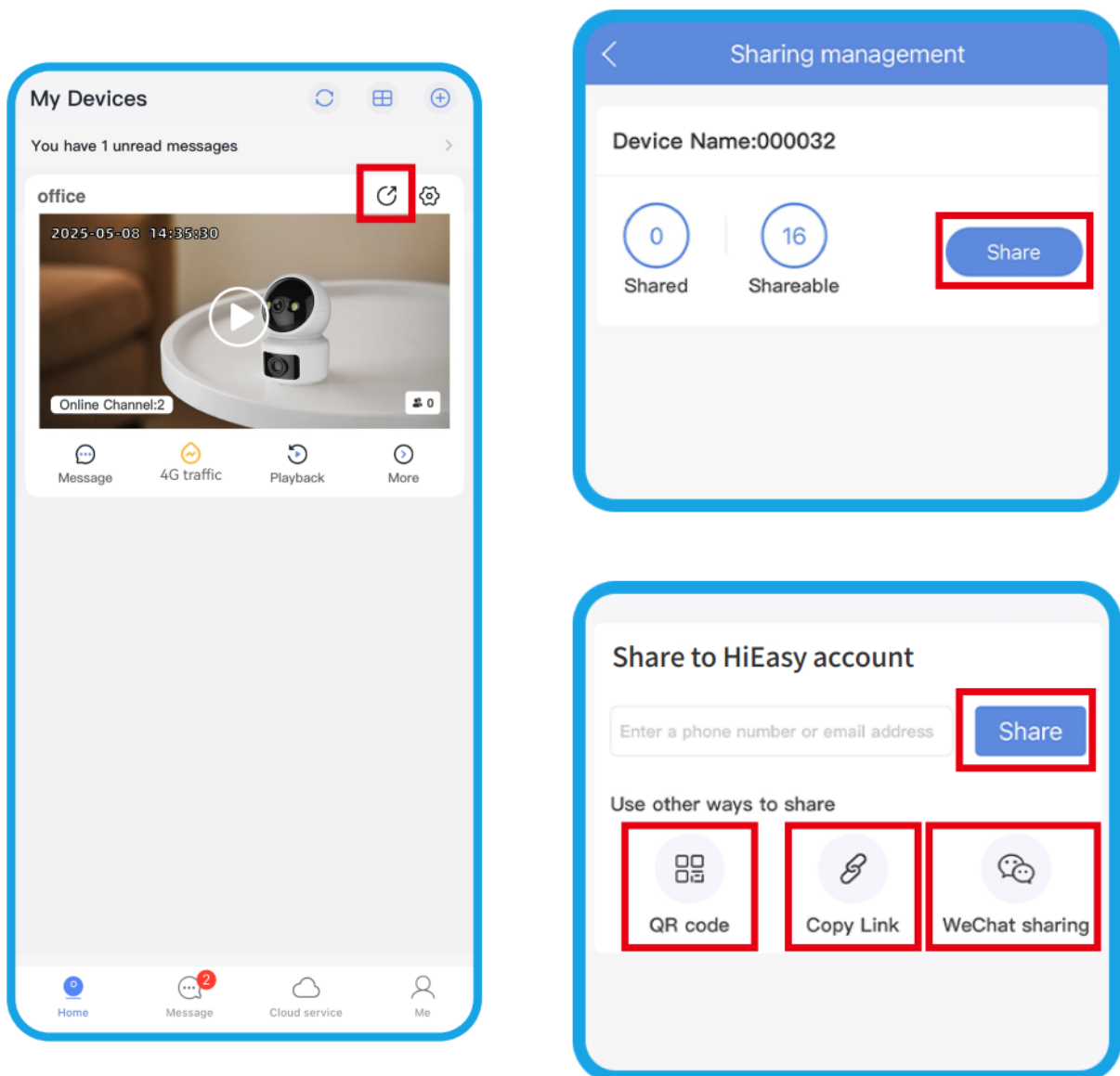
IX. View Playback

View recorded videos. Recordings can be retrieved from the TF card or cloud storage. Cloud storage can be purchased within the APP for more secure recording.



X. Sharing Function

- 1、 Click the share icon on the home page to share the camera with family and friends for viewing. (Requires account registration.)
- 2、 Enter the sharing settings to set sharing permissions, with multiple sharing methods available.



XI. Recording Storage

1、Continuous Recording:

24 - hour continuous recording throughout the day.

2、Alarm - Triggered Recording:

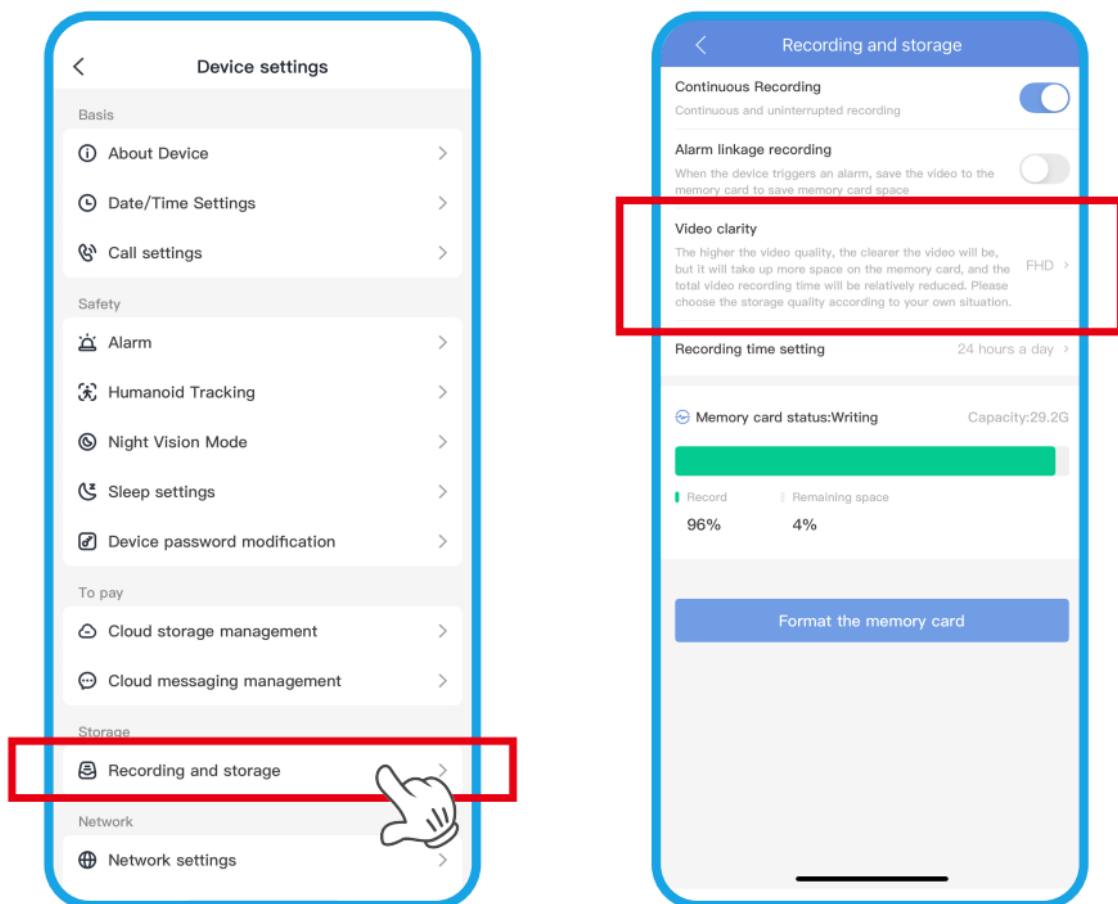
Records only after an alarm is triggered, which can save storage space on the memory card and make the recording last longer.

3、Video Clarity:

Higher clarity results in shorter video storage time.

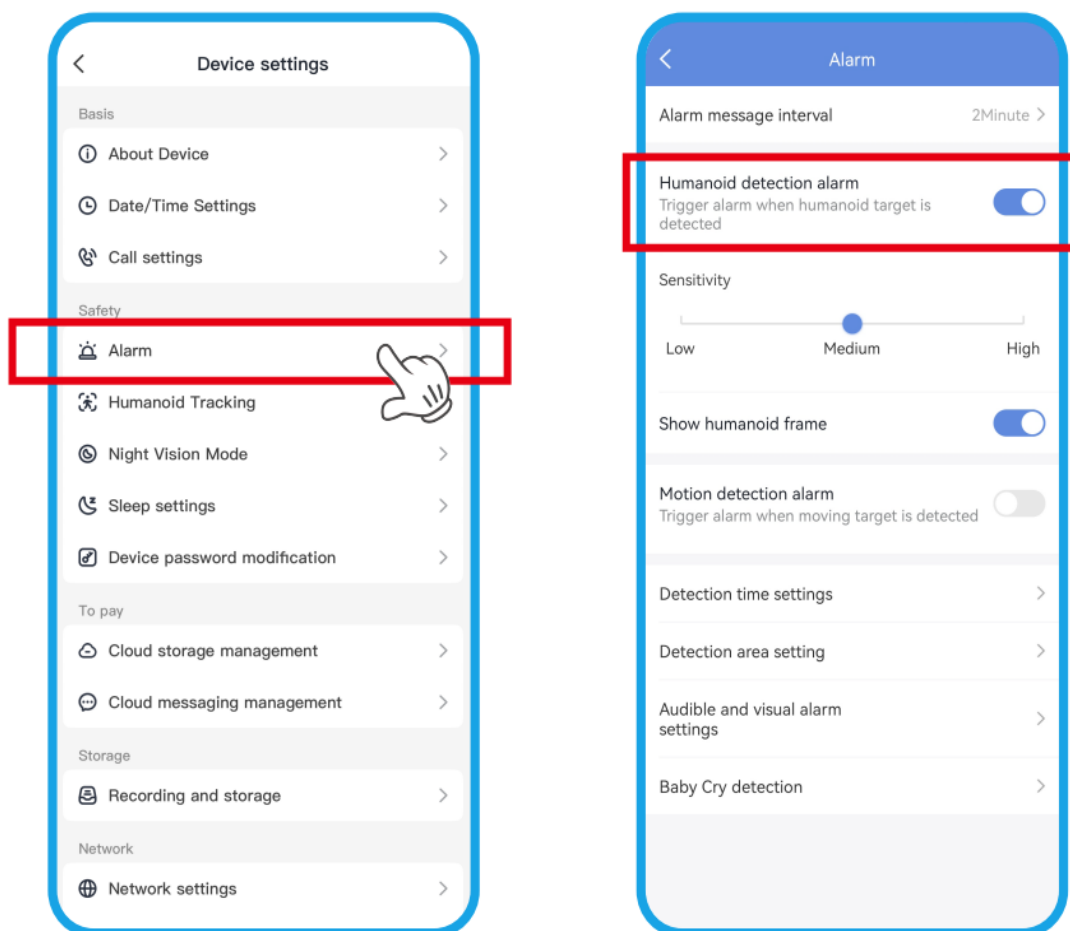
4、Formatting the Storage Card:

New cards need to be formatted before first use. Existing recordings will be cleared when formatting.



XII. Alarm Management

- 1、 Human - Shape Detection Alarm:** When turned off, it will not detect people entering and will not send alarm messages. High sensitivity detects at a longer distance, and low sensitivity reduces false alarms.
- 2、 Motion Detection Alarm:** Used to detect the movement of objects other than people. Off by default.
- 3、 Detection Area:** Set the area for human - shape detection.
- 4、 Sound and Light Alarm:** Set different alarm sounds and modes.
- 5、 Crying Detection:** Detects the crying of infants and toddlers to monitor the baby.



XIII. Night Vision Modes

1、 Smart Dual - Light:

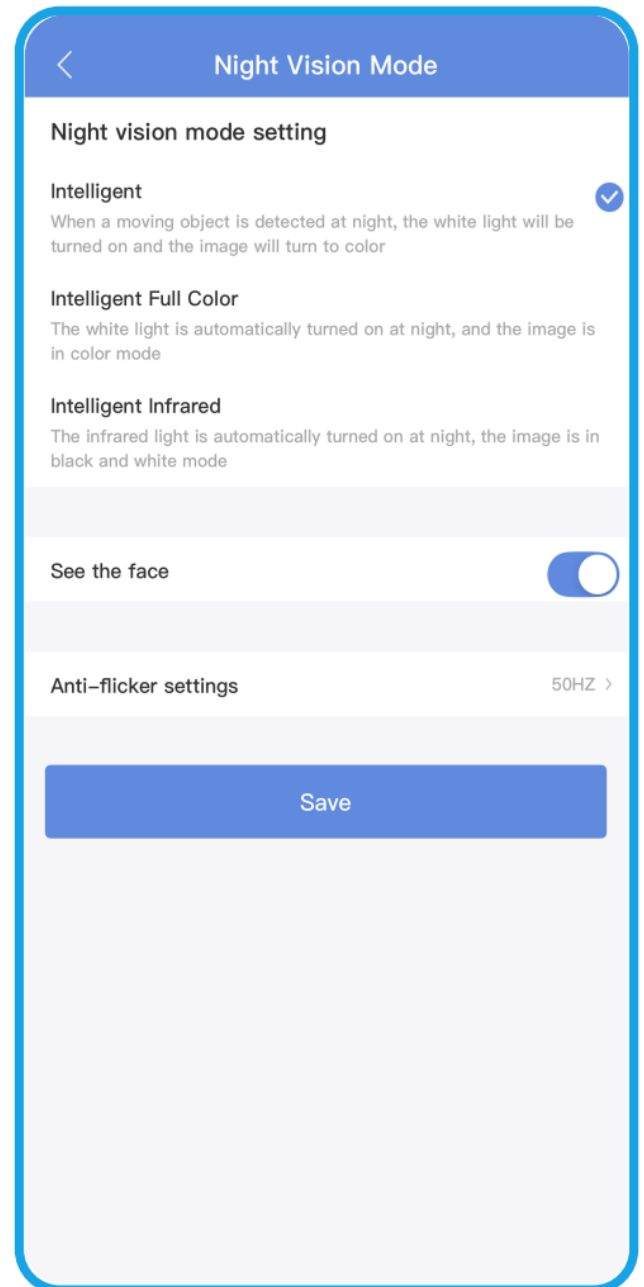
In night vision black - and - white mode, when a person is detected, the white - light floodlight turns on and the image becomes color. It reverts to black - and - white after the person leaves.

2、 Smart Full - Color:

In night vision color mode, the white - light floodlight turns on automatically.

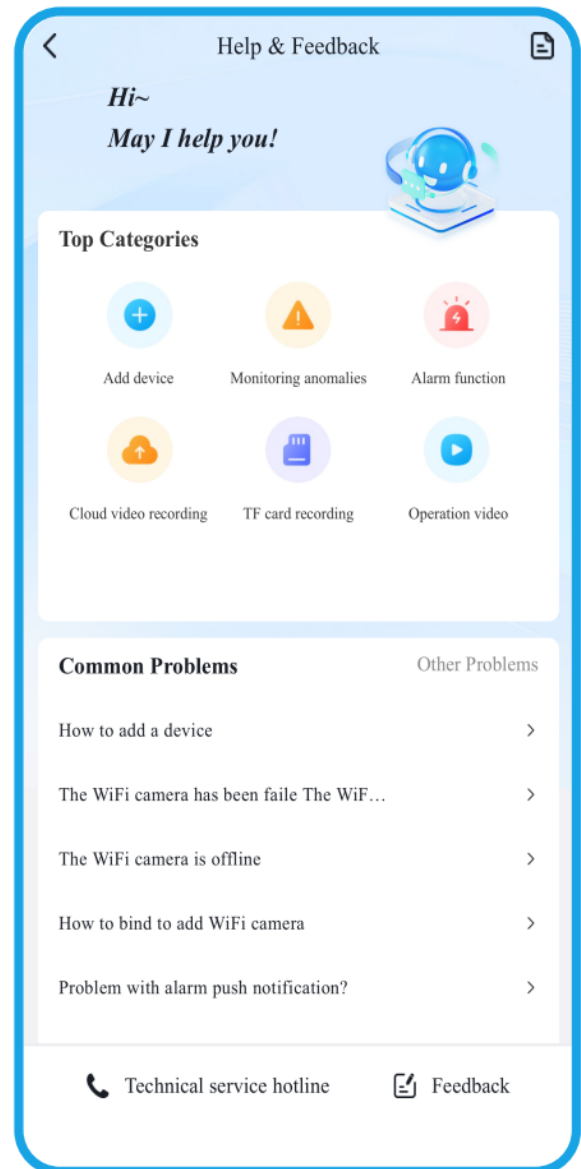
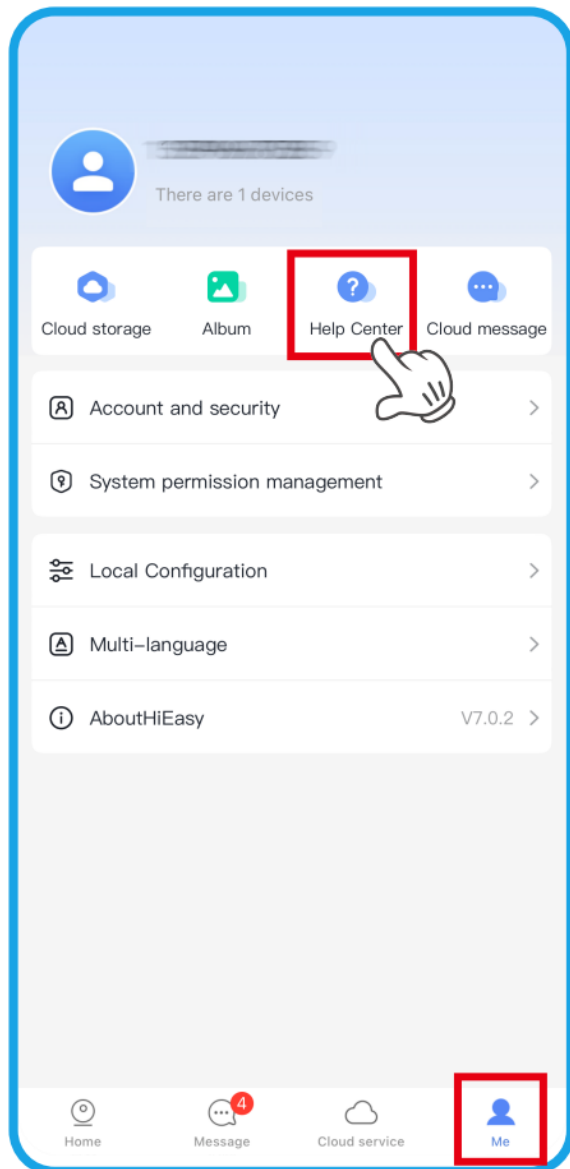
3、 Smart Infrared:

In night vision black - and - white mode, the infrared fill - light turns on.



Frequently Asked Questions:

Please open the "Help" center in the APP. There are answers to common questions and video tutorials, which can easily solve your problems.



Part 2 【Function Operation and Description】

Professional name explanation: **Settings/Add:set preset,** **Call:Call preset,**
[N]+[set]=Enter N first and then click SET.“+”=Then

1.Preset settings

Rotate the camera to the position you want, then set this position to “N” preset
[N] +[SET] ,N is preset point, 1-255 number can be optional (But the command Preset isn't include). Set= set preset

2.Call preset(need set the corresponding preset point) : [N]+[CALL]

N for preset point, 1-255 number can be optional, camera can move to preset point after call, Zoom, focus and aperture lens will automatically change to preset parameters , camera preset display on the monitor.

3.Delete all preset point: [100] +[CALL] ,Call no.100 preset, clear the all preset :[1]+[0]+[0]+[CALL] .

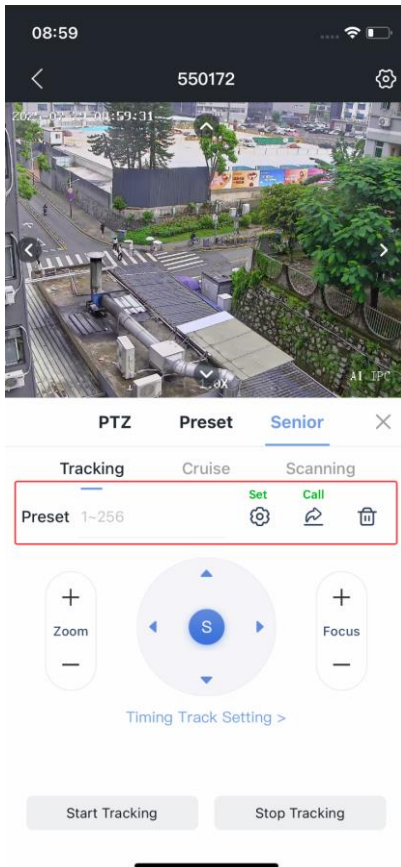
4.Auto scan(Horizontal rotation)

[120]+[CALL], call No.120 ,the lever of 360 degree clockwise automatic scanning

Modify speed of Auto scan :

[121]+[Set] +[N]+[Set]; (N=1-10; N represents scan speed percentage,default is 8=80%)

If you want to change speed of auto scan to **50%**; Setting method: [121]+[Set] +[5]+[Set]



5.The inspection group programming

Before you start cruising, you first need to set the preset position in the cruise path.**Please refer to “ 3.Preset settings”**

[101]+[CALL] for Open the first Cruise of 1-64 to scan ;

Modify the stay time of the Cruise:

[123] +[Set] + [N]+[Set]; (N=3-10; N represents the dwell time at each preset,default is 5 seconds)

If you change the dwell time to **10 seconds**. Setting method:[123]+[Set] + [10]+[Set]

Modify speed of the Cruise:[115]+[Set] + [N]+[Set]; (N=1-10; N represents Cruising speed percentage,default is 8=80%)

If you change speed of the Cruise to **40%**; Setting method:[115]+[Set] + [4]+[Set]

6,Left and right limit scan settings

The users can set left and right limit point in the range of the rotation, the speed dome can return scan in setting range
[81]+[SET]: left limit; [82]+[SET]: right limit, [83]+[CALL]: start right and left limit scan

Modify the speed of right and left limit scan:

[141] +[SET]+[N] +[SET]; (N=1-10; N represents Cruising speed percentage,default is 5=50%)

If you change speed of the limit scan to **100%**; Setting method:[141]+[Set] + [10]+[Set]

7.Idle action settings:The camera performs a certain function in standby mode

[131]+[Call]:OFF Idle position set

Idle position setting:[131]+[Set]+[N]+[Call],

N=Function preset;When N=98, the camera Open the first Cruise of 1-16 to scan function. Setting method:[131]+[SET]+ [98]+[CALL]

Set the time when the idle action start: [132]+[set]+[N]+[SET]; (N=1-30; N represents Idle time,default is 5 minutes)

8.Restore factory settings for Speed dome

[106]+[Call]+[64]+[CALL] for restore PTZ speed dome to factory setting; Setting method:[106]+[Call]+[64]+[CALL]

Part 3 Speed dome Command Table

Command Name	Function description	NO.	Call	Set
Tracking Command				
Set a Return Position	This position is the initial position where the camera starts tracking/the automatic return position after tracking:88+set	88		√
Turn on fixed-point tracking	Turn on tracking based on initial position:97+call	97	√	
Set tracking return time	The time when the camera automatically returns to the initial position after the tracking target disappears:153+set+N+set,N=1-30 seconds, default N=10	153		√
Turn on cruise Tracking	Camera activation is based on preset position cruise tracking (some preset positions need to be set first (range: 1-32):98+call	98	√	
Turn off all Tracking	96+set	96		√
tracking Enable ZOOM	The camera automatically ZOOM when tracking:95+set (default)	95		√
Tracking invalid ZOOM	The camera invalid ZOOM when tracking , 95+call	95	√	
Set tracking Pan speed	150+set+N+set, N=1-100,default N=60	150		√
Set tracking Tilt speed	151+set+N+set, N=1-100, default N=50	151		√
Idle action				
Settings idle action Automatically turn on after successful setting	131+set+N+Call; N= Function command N=1 The camera automatically stays at preset position 1 when idle N=101 Turn on cruise; N=97 Turn on Fixed tracking N=83 Turn on area scanning; N=120 Turn on 360°Pan scanning;N=85 Turn on 360°Pan Tracking N=98 Turn on cruise tracking	131		√
Wiper control I(if support)	71+call (after executing once, the wiper will automatically stop after wiping 3 times, and can be operated repeatedly)	71	√	
Defog control	72+call: Enable defogging function. 72+Settings: Turn off the defogging function. Set the working duration of defogging: 73+settings+N+settings, N=1-24 hours, default N=1 hour	72	√	
Defog time	Set the working duration of defogging: 73+settings+N+settings, N=1-24 hours, default N=1 hour (automatically closed after 1 hour of activation)	73		√
OSD Menu control	Called by 80+, the screen camera control menu can be opened, and the PTZ control direction key is used for rotation and setting.	80	√	
General function setting of Speed dome				
Modify manual control Pan Speed	160+set+N+set, N=1-10, N=Speed ,default N=5	160		√
Modify manual control tilt Speed	161+set+N+set, N=1-10, N=Speed ,default N=5	161		√
360°Pan scanning	120+call	120	√	
Modify Pan scanning	121+set +N+set, N=1-10,default N=5	121		√
Area scanning				
Set Left Border	Set the leftmost position of area scanning , 81+set	81		√
Set right Border	Set the rightmost position of area scanning , 82+set	82		√
Turn on area scanning	83+call,	83	√	
Modify Area scan speed	Modify Area scan speed , 141+set+N+set, N=1-40, default N=6	141		√
Modify automatic recovery time	126+Set+N+set,N=1-10(minute),default N=5			
Cruise				
Turn on cruise	101+call	101	√	
Modify cruise speed	115+set+N+set, N=1-10,default N=5	115		√
Modify cruise dwell time	Modify the dwell time at each preset position :123+set+N+set, N=1-200 seconds, default N=10	123		√
Turn on speed ratio	he larger the ZOOM, the slower the rotation speed(default)	108	√	
Turn off speed ratio	ZOOM changes, rotation speed remains unchanged	108		√
Focus mode setting	Focus mode setting: 250+Set+N+Call, When N=1, the camera will only automatically focus when ZOOM is triggered When N=2, any PTZ action triggered will automatically focus the camera When N=3, changes in PTZ or image transmission will also trigger radial basis function autofocus	107		√
Minimum focus distance setting	Minimum focus distance setting: 251+Set+N+Call, When N=1, the minimum focusing distance is 1.5 meters When N=2, the minimum focusing distance is 3 meters When N=3, the minimum focusing distance is 6 meters			
Del all preset	100+call/140+call	100	√	
Reset speed dome	106+call+64+call	106	√	
Reboot LENS and speed dome	107+set+64+call	107		√